



Kenton C. Ward, CFM
Surveyor of Hamilton County
Phone (317) 776-8495
Fax (317) 776-9628

Suite 188
One Hamilton County Square
Noblesville, Indiana 46060-2230

Map Correction-Field Verification

Drain Number: #102

Drain Length: N/A

Drain Name: QF. Henley; West Carmel Elem. Change +/-: N/A

Date: 3-8-2011

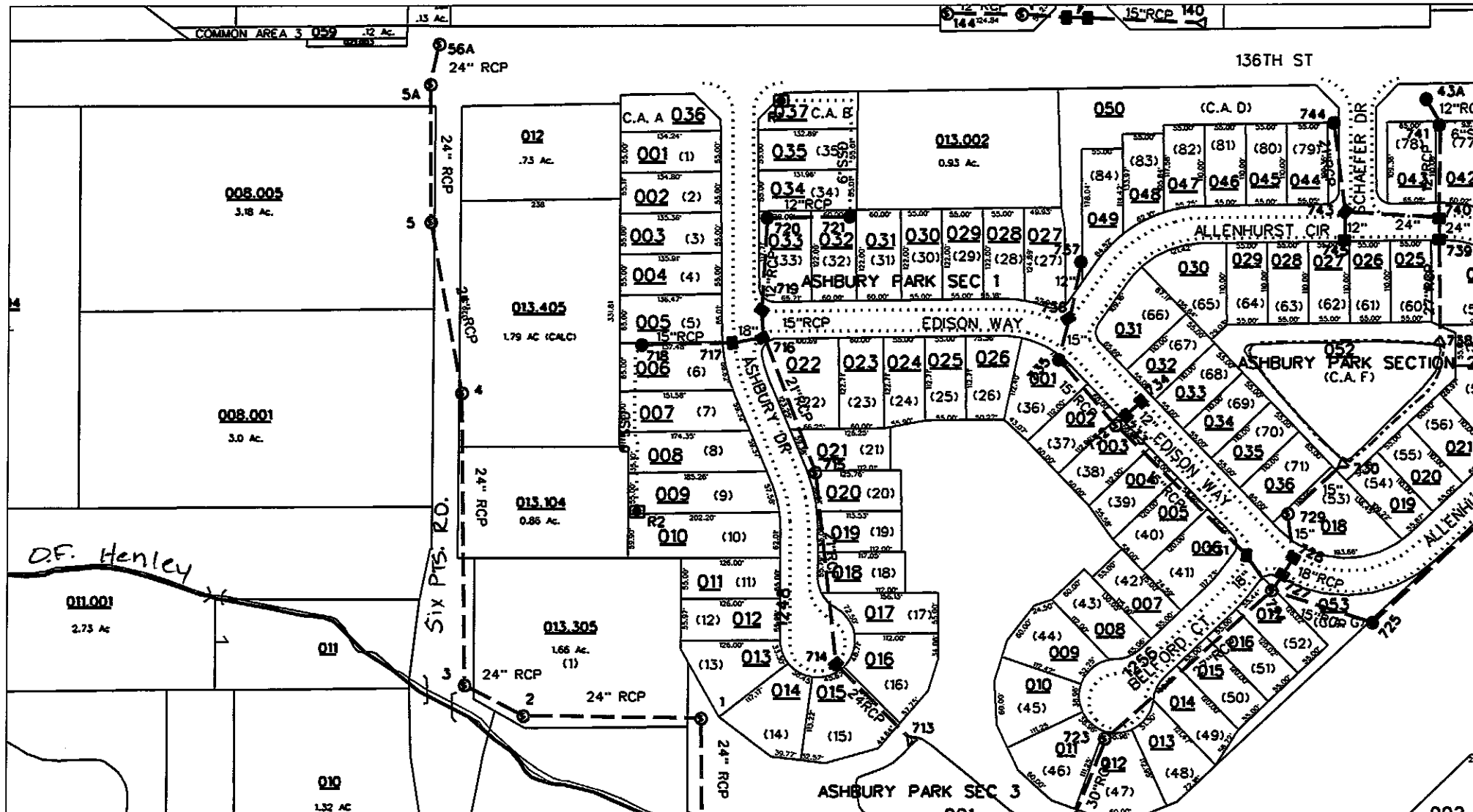
New Length: N/A

Verified By: SLM, LMC

Notes & Sketch:

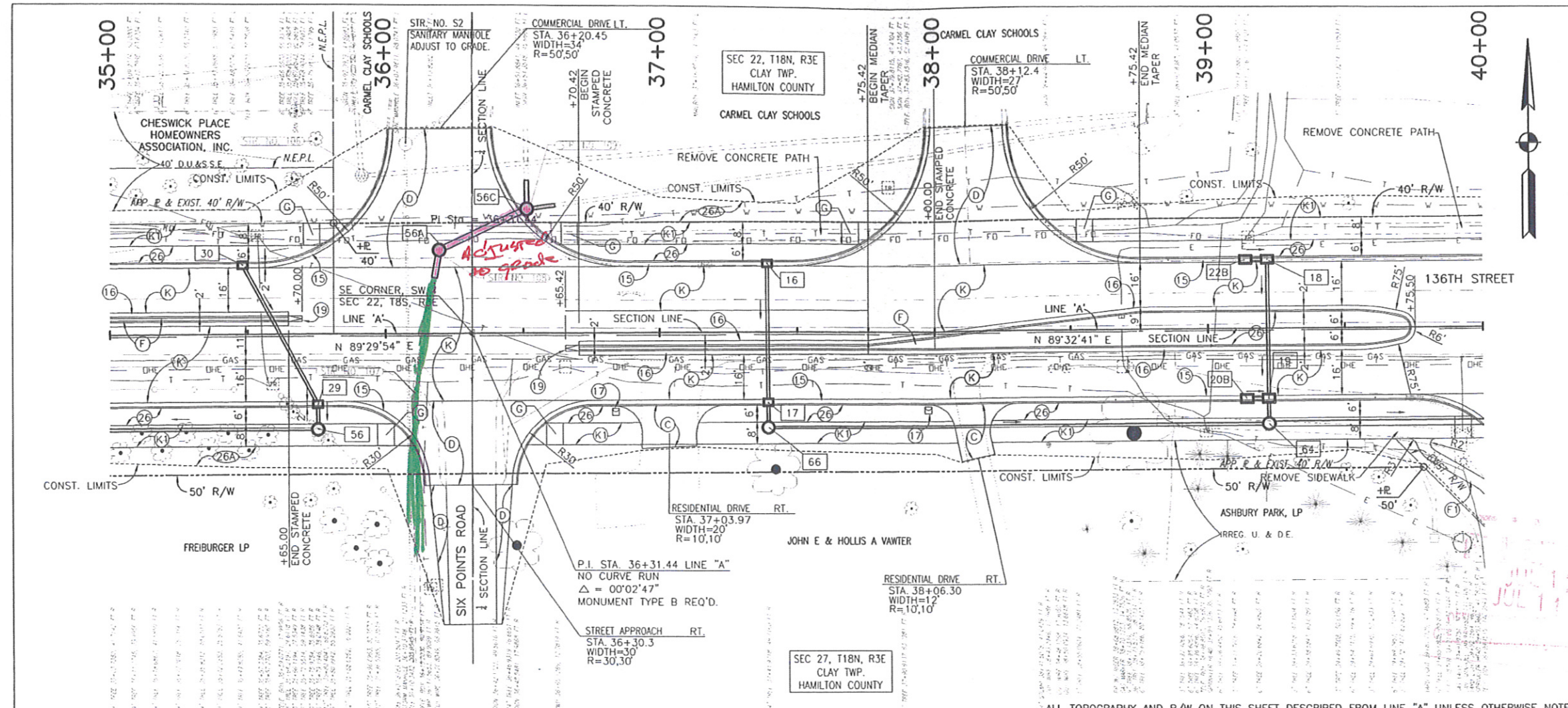
The City of Carmel widened 136th St. between Ditch and Springmill Roads (See plans by DLZ with Project #04-07)
Existing Str. 6 was replaced and brought up to grade
With new structure 56A. (see sheet 11)

Suzanne L. Mills
GIS Specialist



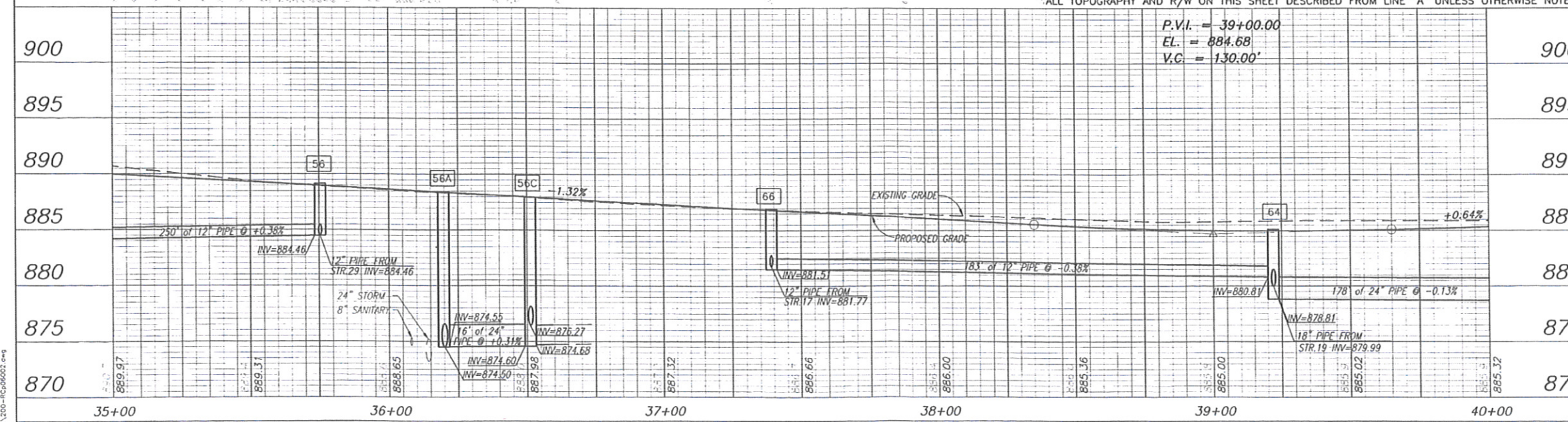
sub_rg_dm.dgn 3/14/2011 1:51:20 PM

See plans by: DLZ PROJ. 04-07; Sheet 11



- LEGEND**
- (15) COMBINED CONCRETE CURB AND GUTTER TYPE II
 - (16) COMBINED CONCRETE CURB AND GUTTER TYPE III
 - (17) MAILBOX ASSEMBLY
 - (19) CONCRETE CENTER CURB TYPE D
 - (26) SODDING, NURSERY
 - (26A) MULCHED SEEDING TYPE 'U' ON 4" TOPSOIL
 - (C) CEMENT CONCRETE PAVEMENT FOR DRIVEWAYS, ON 6" COMPACTED AGGREGATE, SIZE NO. 53
 - (D) HMA FOR APPROACHES TO BE: 165# HMA SURFACE, TYPE B ON 275# SYD. HMA INTERMEDIATE, TYPE B ON 990# SYD. HMA BASE, TYPE B
 - (F) 4" DECORATIVE COLORED CONCRETE ON 6" COMPACTED AGGREGATE, SIZE NO. 53
 - (K) MAINLINE PAVEMENT SECTION, SEE TYPICAL SECTION SHEET.
 - (KI) TRAIL PAVEMENT SECTION, SEE TYPICAL SECTION SHEET.
 - (-) CONCRETE CURB RAMP (LETTER INDICATES TYPE), COLORED CONCRETE
 - (F1) 4" CONCRETE SIDEWALK

- 16 37+39, LT. STR. NO. 16
INLET TYPE MOD J-10 & 50' OF 12" PIPE REQ'D
- 17 37+39, RT. STR. NO. 17
CATCH BASIN TYPE K-10 W/ CATCH BASIN HOOD & 9' OF 12" PIPE REQ'D
- 18 39+22, LT. STR. NO. 18
INLET TYPE C-15 & 50' OF 18" PIPE REQ'D
- 19 37+22, RT. STR. NO. 19
CATCH BASIN TYPE MOD C-15 W/ CATCH BASIN HOOD & 50' OF 18" PIPE REQ'D
- 20B 39+14, RT. STR. NO. 20B
INLET TYPE B-15 & 8' OF 12" PIPE REQ'D
- 22B 39+14, LT. STR. NO. 22B
INLET TYPE B-15 & 8' OF 12" PIPE REQ'D
- 29 35+75, RT. STR. NO. 29
CATCH BASIN TYPE K-10 W/ CATCH BASIN HOOD & 9' OF 12" PIPE REQ'D
- 30 35+48, LT. STR. NO. 30
INLET TYPE MOD J-10 & 57' OF size" PIPE REQ'D
- 56 35+75, 34' RT. STR. NO. 56
MANHOLE TYPE C-4 & 250' OF 12" PIPE REQ'D
- 56A 36+20, 30, 2' LT. STR. NO. 56A
MANHOLE TYPE C-4 CONNECT 8' OF 24" PIPES WITH EXISTING PIPE
- 56C 36+51, 7, 44, 9' LT. STR. NO. 56B
MANHOLE TYPE C-4 & 32' 46" OF 24" PIPE REQ'D. CONNECT 8' OF 15" & 18" PIPES WITH EXISTING 15" & 18" PIPES.
- 64 39+22, 34' RT. STR. NO. 64
MANHOLE TYPE C-4 & 178' OF 24" PIPE REQ'D
- 66 37+39, 34' RT. STR. NO. 66
MANHOLE TYPE C-4 & 183' OF 12" PIPE REQ'D



ADDENDUM 1	2-16-07	JAR
------------	---------	-----

HORIZONTAL SCALE	ROAD FILE
1"=20'	
VERTICAL SCALE	DESIGNATION
1"=5'	
SURVEY BOOK	SHEETS
	11 of 76
CONTRACT	PROJECT
	04-07

Date: Feb. 16, 2007, 10:24am, User: DLZ
 File: M:\Verm\0403\0303\Plan\1200-18696002.dwg



RECOMMENDED FOR APPROVAL: *Jerry A. Richardson* DATE: _____
 DESIGN ENGINEER

DESIGNED: FS DRAWN: JJC
 CHECKED: JAR CHECKED: FS

CITY OF CARMEL
186th STREET

PLAN AND PROFILE SHEET
LINE 'A' STA. 85+00 TO 40+00